

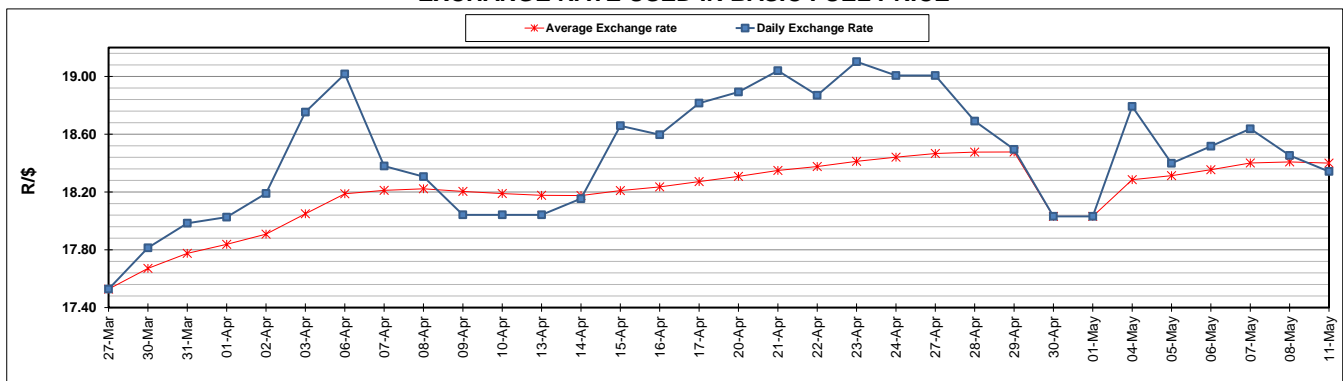
	PETROL 95 ULP	PETROL 93 ULP & LRP	DIESEL 0.05%	DIESEL 0.005%	ILL. PAR.
GAUTENG PUMP PRICE (SA c/l) AS FROM 06/05/2020	1,222.000	1,202.000	-	-	-
WHOLESALE PRICE (SA c/l) AS FROM 06/05/2020	-	-	1,108.560	1,117.960	449.828
SINGLE NATIONAL MAXIMUM RETAIL PRICE	-	-	-	-	543.000
BASIC FUEL PRICE - 11/05/2020 (SA c/l)	425.278	407.301	384.462	394.486	304.160
PRESS RELEASE CONTRIBUTION TO BFP 06/05/2020 - 11/05/2020 (SA c/l)	274.770	264.770	357.630	367.030	245.128
UNIT OVER/(UNDER) RECOVERY - 11/05/2020 (SA c/l)	(150.508)	(142.531)	(26.832)	(27.456)	(59.032)
AVERAGE BASIC FUEL PRICE 30/04/2020 - 11/05/2020	377.493	362.430	349.755	359.059	233.974
AVERAGE UNIT OVER/(UNDER) RECOVERY 30/04/2020 - 11/05/2020	(15.723)	(10.660)	88.375	85.971	122.654

ANALYSIS MOVEMENT OF AVERAGE OVER/(UNDER) RECOVERY

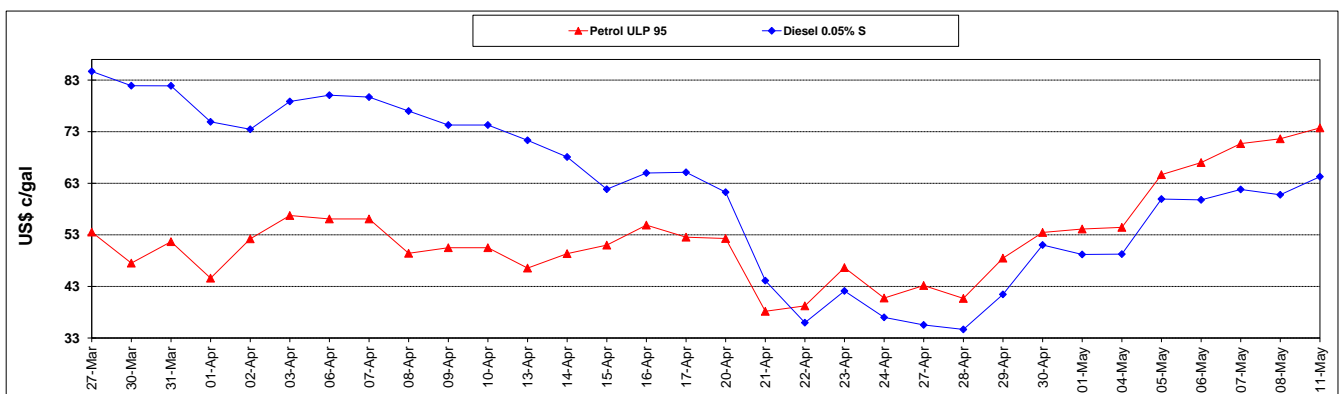
	PETROL 95	PETROL 93	DIESEL 0.05%	DIESEL 0.005%	ILL. PAR.
- MOVEMENT IN INTERNATIONAL PRODUCT PRICES	(17.297)	(12.171)	86.917	84.474	121.679
- MOVEMENT IN EXCHANGE RATE	1.574	1.511	1.458	1.497	0.975
AVERAGE UNIT OVER/(UNDER) RECOVERY 30/04/2020 - 11/05/2020	(15.723)	(10.660)	88.375	85.971	122.654

R/\$ EXCHANGE RATE - (R/\$18.3419 - 11/05/2020)

EXCHANGE RATE USED IN BASIC FUEL PRICE



INTERNATIONAL PRODUCT PRICES OF BASKET USED IN BASIC FUEL PRICE



BASIC FUEL PRICE IN SA CENTS PER LITRE

